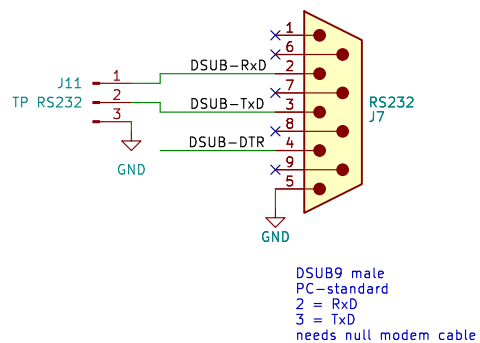
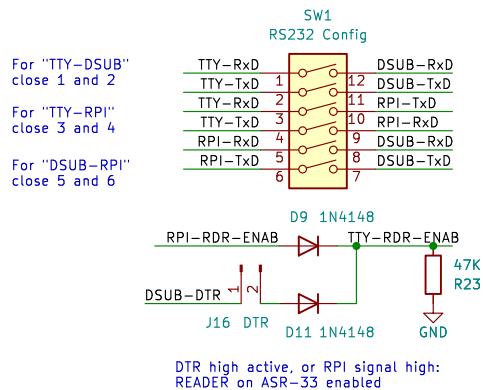


Close only ONE of these 3 options!



J8rg Hoppe

Sheet: /
File: tty2pi.kicad_sch

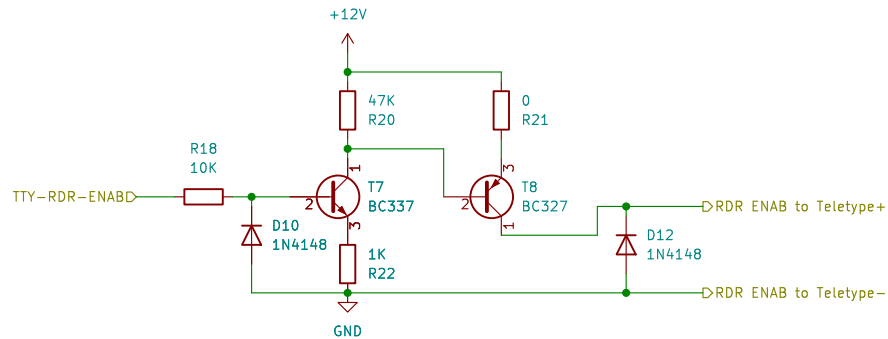
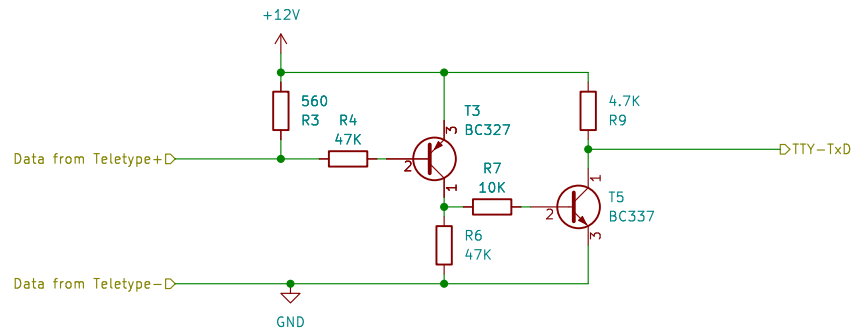
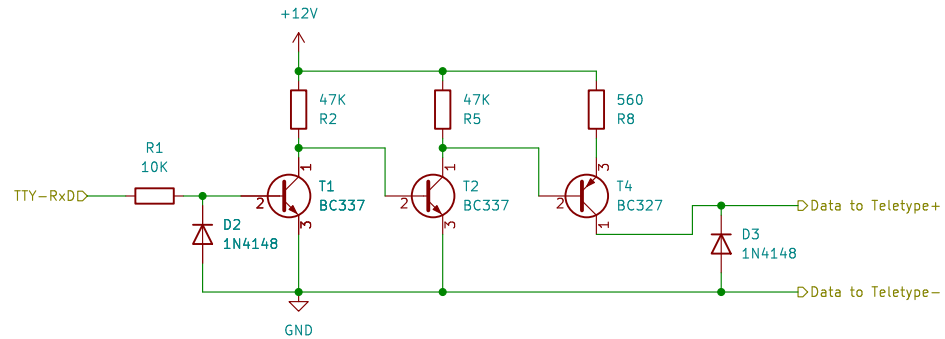
Title: TTY2PI

Size: A4 Date: 2024-03-21
KiCad E.D.A. kicad 7.0.11

Rev:
Id: 1/3

Connects to ASR33 on one side
and provides an 12V RS232 interface

20mA driver current:
DEC DL11-W: +5V - -15V with 560 Ohm => $I = 20/560 = 35\text{mA}$
Deramp original: $I = 12\text{V}/660 = 18\text{mA}$
Here: $I = 12\text{V}/560 = 21.5\text{mA}$



Sheet: /asr33/
File: asr33.kicad_sch

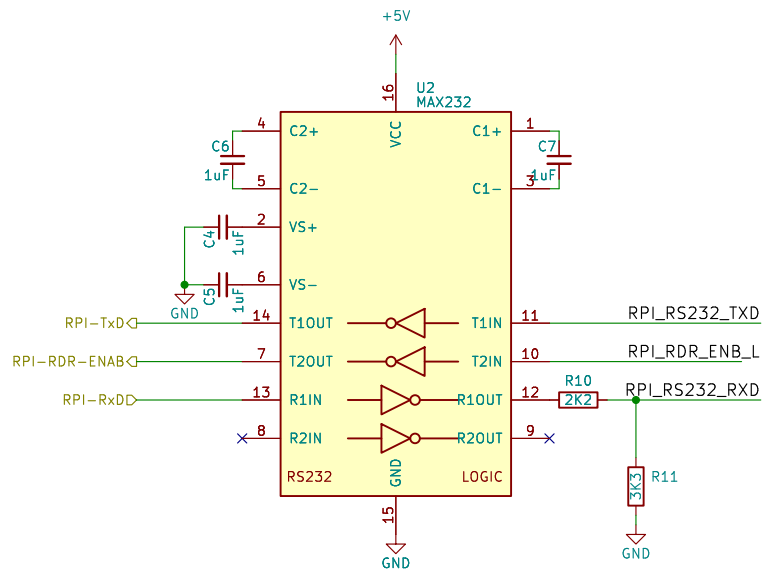
Title:

Size: A4
KiCad E.D.A. kicad 7.0.11

Date:

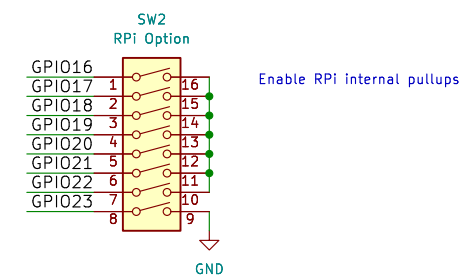
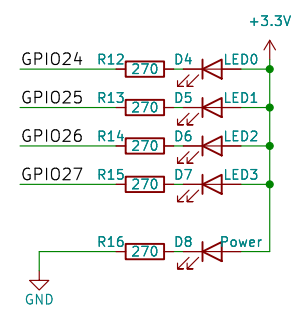
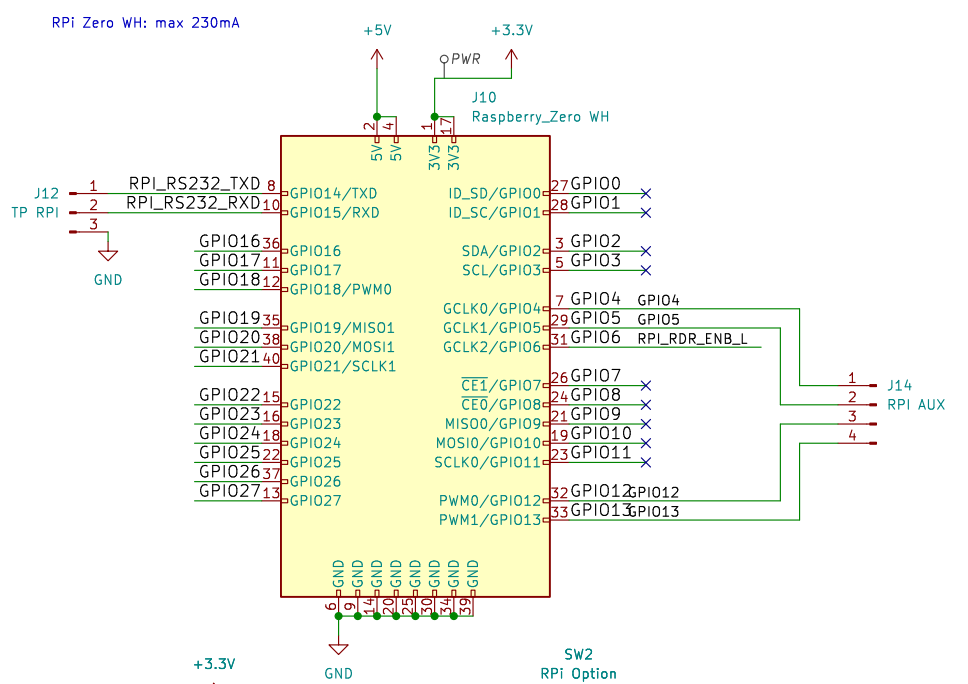
Rev:
Id: 2/3

RPI UART with 3.3V/GND levels



MAX232 is cheaper, but 5V: divide 5V outputs to 3.3V
 RPI_RDR_ENAB_L:
 3.3V if GPIO not initialized => RDR_ENAB is -5V by default

3.3V produced by RPi



Sheet: /rpi/		File: rpi.kicad_sch	
Title:			
Size: A4	Date:	Rev:	
KiCad E.D.A.	kicad 7.0.11	Id: 3/3	